

The DIBELS Super Institute and Mentor Summit will return to Las Vegas for 2017

2

Experimental Spanish version of Preschool Early Literacy Indicators (PELI®) now available

2

Recent news stories about school districts using DIBELS data to inform instruction and increase student success

3



DIBELS® NEWSLETTER

Volume 7 ▪ No. 4

December ▪ 2016

DIBELS® News

New Above Benchmark Level Webinar

DIBELS Next now includes a new benchmark level to differentiate levels of student performance that are just at or slightly above the benchmark from those that are solidly above. DIBELS users can view a free webinar with more information about the Above Benchmark level at <http://bit.ly/2g4msWu>.

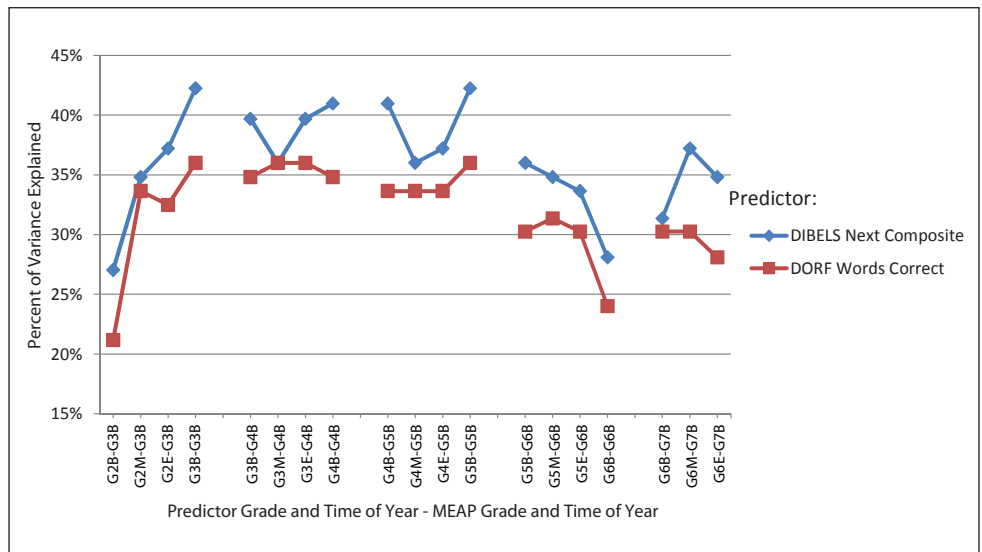
Student Lexile® Measures

DIBELSnet users can generate a report showing student Lexile measures based on the DIBELS Next Composite Score. The student Lexile measures can be used to compare a student's reading level to the text difficulty recommendations made by the Common Core State Standards. DIBELSnet is available for \$1 per student per school year and historical data from other DIBELS data management systems can be imported free of charge. To learn more, visit <https://dibels.net/>.

Technical report examines predictive validity of DIBELS Next® with the MEAP Reading Assessment

In December 2015 the Michigan's Integrated Behavior and Learning Support Initiative (MIBLSI) released a technical report on the predictive validity of curriculum-based measures including DIBELS Next.

The report examined how curriculum-based measures widely used throughout the state were able to predict performance on Michigan's state-wide assessment of reading proficiency, the Michigan Educational Assessment Program (MEAP) Reading Assessment. The MEAP Reading Assessment primarily assesses reading comprehension and vocabulary.



Percent of variance explained by the DIBELS Next Composite Score compared to DORF Words Correct.

Titled, "Using curriculum-based measures to predict reading test scores on the Michigan Educational Assessment Program," the report examines the predictive validity of DIBELS Next.

The report found that the DIBELS Next Composite Score explains additional variance in student performance beyond the DORF Words Correct score. This finding

...continued on Page 3

Mentor's Corner Wanted: Early Elementary Literacy Coach

DMG's partner company Amplify is looking for DIBELS Mentors to fill a new position: Early Elementary Literacy Coach. Amplify provides mCLASS® software to administer and score DIBELS Next on mobile devices. The mCLASS: DIBELS Next software package is used by school districts throughout the U.S. and Canada.

This is a remote position, which means you can mostly work from home, with very little travel required. Please see here for more details on the job description, basic qualifications, and how to apply: <http://bit.ly/2acA90I>

DIBELS Super Institute becomes DIBELS Super Institute and Mentor Summit for 2017



A focus on building the skills and professional network of DIBELS Mentors prompted a change in name from the DIBELS Super Institute to the DIBELS Super Institute and Mentor Summit for 2017.

The DIBELS Super Institute is the premier annual training event

for DIBELS and related assessments, as well as an opportunity to learn how to link DIBELS data to instructional strategies. Offered each summer, it is led by DIBELS Next authors Dr. Ruth A. Kaminski and Dr. Roland H. Good III. Other presenters include DIBELS Next co-author Stephanie Stollar, DIBELS Deep and DIBELS Next Survey author Kelly Powell-Smith, DIBELS Math

author Courtney Wheeler, and PELI co-author Katherine Bravo Aguayo.

The 2017 institute will include a one-day Mentor Summit designed to advance the skills of DIBELS Mentors that support schools to implement data-based decision making. Short workshops on a variety of topics will be offered, along with opportunities for networking. Training opportunities to become a DIBELS Mentor are available online prior to the institute. For more information, visit <http://dibels.org/training.html>.

The DIBELS Super Institute and Mentor Summit will include workshops on DIBELS tools and linked assessments such as Pathways of Progress, DIBELS Deep, and DIBELS Next Survey. Other workshops will focus on assessments related to DIBELS such as DIBELS Math, PELI (preschool), CARI: DIBELS 7–9, and IDEL (Spanish).

The dates for the institute are July 10–13, 2017, and the event will take place at the Luxor Hotel in Las Vegas, Nevada. The Luxor is located on the Las Vegas strip and is close to shopping, restaurants, and entertainment.

Additional details will be posted as they become available at <http://dibels.org/institute/>.

Preschool Early Literacy Indicators (PELI) now available in Spanish

Dynamic Measurement Group released an experimental version of the PELI benchmark assessment books in Spanish for the 2016–2017 school year.

PELI is currently used with over 9,000 preschool students to identify areas of early literacy development that may need special instructional focus in the preschool years. Available as an early release measure, PELI can be used by any school or district that signs up for the early release project at https://dibels.org/ann_peli.html. Programs can join the early release study at any time during the 2016–2017 school year.

Shortly after the release of PELI, programs serving Dual-Language Learners in English and Spanish requested a similar assessment of preschool literacy skills in Spanish. In 2016, the PELI benchmark assessment books were translated to Spanish by PELI co-author Katherine Bravo Aguayo.

At the end of the 2016–2017 school year, sites that used PELI in Spanish will be asked to complete a brief usability questionnaire. The results of the questionnaire will be used to modify the forms prior to establishing technical adequacy on the measures and eventually developing benchmark goals.

For the 2016–2017 school year, the PELI authors are recommending that students are assessed on the version of PELI that reflects



their primary language of instruction. Performance on the alternate language version of the form can be used to further support instructional decisions. Sites should not compare performance on the Spanish version of PELI with the benchmark goals for the English measures.

Current PELI early release research partners that would like to use the Spanish version of PELI should email info@dibels.org for more information.

Technical report examines predictive validity of DIBELS Next with the MEAP Reading Assessment ...continued from pg. 1

supports the DIBELS authors' recommendation that the DIBELS Composite Score be used as the primary score for determining overall need for support for students and is a better predictor of future student performance than any individual DIBELS measure score.

The analyses performed by MIBLSI confirm that the official DIBELS Next benchmark goals from the DIBELS authors are performing according to their design specifications. Approximately 80–90% of students in Michigan that score at or above the DIBELS Next benchmark goal go on to meet expectations on the MEAP Reading Assessment. This matches the intent of the benchmark goals as outlined in the DIBELS Next Benchmark Goals and Composite Score document, <http://bit.ly/1xV3Vk9>.

For information about MIBLSI and to view the technical report, visit <https://miblsi.org/>.

Coming Events

Bridging the Gap: Bringing DIBELS® Data to Instruction

February 8–9, 2016 Dublin, CA

Join 95% Group's Dr. Susan Hall and DMG's Dr. Stephanie Stollar for a jointly presented workshop that will focus on bridging DIBELS data and instruction. The first day teaches how to connect DIBELS Next data in Kindergarten and first grade to intervention strategies for phonological awareness, phonics, and blending. The second day is for second through sixth grade and intervention strategies for phonics, multi-syllable decoding, and vocabulary informed by DIBELS Next data. For information and registration, visit <https://dibels.org/bridgingthegap2017/>.

Live Online Workshops

DIBELS Next Mentoring Workshops

March 10, 2017

A live online DIBELS Next Mentoring workshop is now available for registration. The workshop allows DIBELS Next users to complete the requirement to become DIBELS Next Mentors and receive access to the DIBELS Next training materials. To register for the DIBELS Next Mentoring live online workshop, visit <http://dibels.org/training.html>.

The DIBELS Next Essential and DIBELS Next Data Interpretation workshops are prerequisites for the Mentoring workshop. Both are available as online training workshops at <http://dibels.org/onlinetraining.php>.

PELI Mentoring Workshop

February 21, 2017

Preschool educators can become PELI Mentors by attending a one-day, live online workshop presented by PELI co-authors Ruth A. Kaminski and Katherine Bravo Aguayo. PELI Mentors receive access to PELI training materials and additional resources designed to support schools using PELI data to inform instructional practices. The PELI Essential workshop is a prerequisite and can be completed online. Registration information will be available soon at <http://dibels.org/training.html>.

DIBELS® in the News



© 2016 taschoolreport.com

November 6: Los Angeles, CA

Los Angeles Unified School District is expanding its availability of dual-language immersion programs, partly based on district data showing that students enrolled in a dual immersion program outperformed students in English-only instructional programs on DIBELS. Read more in the LA School Report

article "Dual language immersion programs will grow at LAUSD with or without Prop. 58."

<http://bit.ly/2g8AyKd>

November 10: Lakeville, MA

DIBELS scores were included in principals' presentations of SMART (specific, measurable, attainable, realistic) goals to the Freetown-Lakewille Regional School Committee. South Coast Today's article "F-L principles share SMART goals" has more info. <http://bit.ly/2fTd3B8>

If there is an article you would like to see included in DIBELS in the News, please email info@dibels.org.

July 28: Milburn, NJ

The NorthJersey.com article "At Millburn schools, learning not just for students" describes summer professional development for teachers, including a workshop titled "Diving into DIBELS." <http://bit.ly/2eyRlov>

July 29: Rochester, NH

DIBELS is being used to track progress in the Rochester School Department as it goes into its second year implementing the Orton-Gillingham approach to instructing students with dyslexia. Read more in the fosters.com article "New read-

ing method making strides in Rochester." <http://bit.ly/2fQujp8>

July 25: Owatonna, MN

Use of DIBELS to identify students for a summer reading program in Owatonna School District is the focus of the owatonna.com article "Summer programming offers theme-based learning." <http://bit.do/cnj9p>



© 2016 owatonna.com